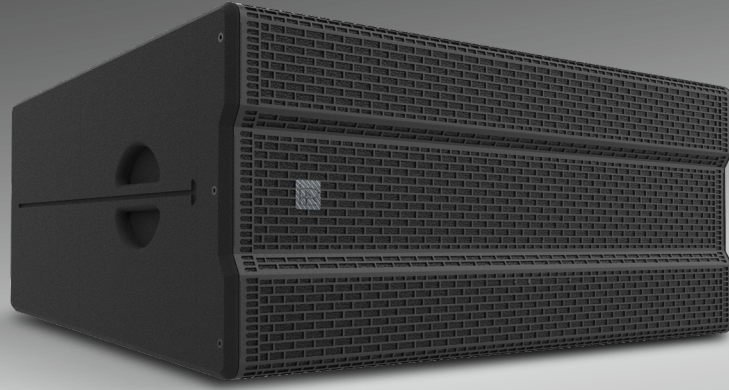


# COBRA14

## RX14



### Acoustic Design: Coaxial Precision, Symmetrical Power

The RX14 utilizes a fully symmetrical architecture delivering constant directivity (80° H x 60° V). Dual 14" neodymium LF units flank a custom B&C coaxial MF/HF assembly, ensuring seamless phase transition and minimal interference. The rotatable CD horn covers 45 Hz – 18 kHz, maintaining a uniform sound field across large areas.

### Structure & Durability: Ruggedized for Long-Term Use

The high-density birch plywood enclosure eliminates unwanted vibration, while the polyurea coating and metal grille offer protection against impacts and environmental wear.

### Application & Expansion: Large Venue Specialist

Specifically designed for stadiums, theaters, and event centers. When linked with subwoofers, the RX14 extends its low-end potential to meet the most rigorous large-venue acoustic demands.

**45 Hz - 18 kHz**

Frequency Response

**142 dB**

Maximum SPL

**2 x 14"** (LF)

Transducers

**1 x 4"** (MF)

Transducers

**1 x 2.5"** (HF)

Transducers

**H 80°** Rotatable

Directivity

**V 60°** Rotatable

Directivity

**8°** (Trapezoidal Enclosure - Fixed Angle)

Splay Angle

**IP55**

IP Rating

**53 kg** (116.8 lbs)

Net Weight

### Technical Specifications:

AES Power	LF: 1,400 W	MF: 110 W	HF: 80 W
Program Power	LF: 2,800 W	MF: 220 W	HF: 160 W
Nominal Impedance	LF: 4 ohm	MF: 8 ohm	HF: 8 ohm
Acoustic Modes	LF: Bass-reflex	CD horn	
Pin Assignment	1+/1-(INPUT), 2+/2- (Link)		
Connectors	2x4-points Speakon®		
Rigging Hardware	Optional dedicated vertical hanger and dedicated horizontal mounting brackets		
Cabinet Coating	All-birch plywood with black polyurea wear-resistant finish		
Rigging Points	M8		
Maximum Output Sound Pressure Level (SPL)	LF: 140 dB	MF: 142 dB	HF: 141 dB
Sensitivity (1W/1m)	LF: 99 dB	MF: 115.3 dB	HF: 116.5 dB
Dimensions (W x H x D) mm	970x417x675 mm (38.2"x16.4"x26.6")		
Product Code	12321700207676		

### Dimensional Drawing:

