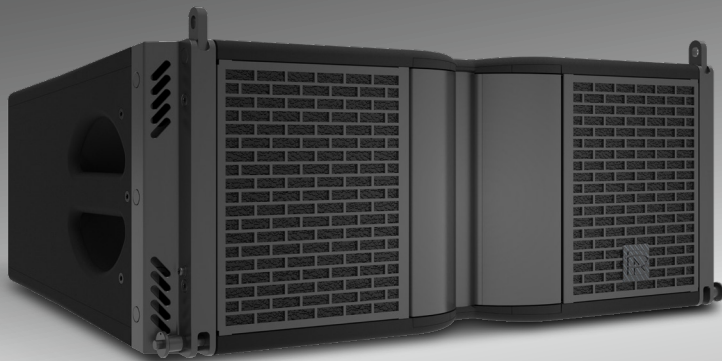


# RAFALE4

## RL4



### Acoustic Design: Precise Imaging, Articulate Detail

The RL4 is a portable solution for small-to-mid-sized applications, offering adjustable 90°–110° directivity. It utilizes dual 8" neodymium LF drivers and a centrally positioned 1.4" exit (3" voice coil) HF compression driver for coherent wave coupling. With a range of 60 Hz – 20 kHz, it emphasizes clarity and high-definition detail.

### Structure & Durability: Dynamic Impact, High-Efficiency Design

Featuring a steel-and-aluminum quick-rigging system (0°–10° splay), the birch plywood enclosure is protected by UV-resistant polyurea wear paint. The metal grille and acoustically transparent lining offer full component protection. It functions excellently as a standalone array or as a fill speaker in larger RL15/RL2 systems.

### Application & Expansion: Flexible Deployment

Designed for flexibility across small-to-medium venues, pairing it with FS4 subwoofers extends low-frequency response and sound field coverage.

60 Hz - 20 kHz

Frequency Response

139 dB

Maximum SPL

2 x 8" (LF)

Transducers

1 x 3" (HF)

Transducers

H 90° 110° Adjustable

Directivity

V 10°

Directivity

0° 1° 2° 3° 4° 5° 6° 7° 8° 9° 10°

Splay Angle

IP55

IP Rating

20 kg (44.1 lbs)

Net Weight

### Technical Specifications:

AES Power Handling	400 W
Program Power	800 W
Nominal Impedance	8 ohm
Acoustic Modes	LF: Bass-reflex    HF: Waveguide-horn
Pin Assignment	1+/1-(INPUT) ,2+/2- (Link)
Connectors	2x4-points Speakon®
Rigging Hardware	High-grade stainless steel and aluminum-magnesium alloy with specialized outdoor powder coating
Cabinet Coating	All-birch plywood with black polyurea wear-resistant finish
Dimensions (W x H x D) mm	630x243x355 mm (24.8"x9.6"x14.0")
Product Code	12321500200001

### Dimensional Drawing:

