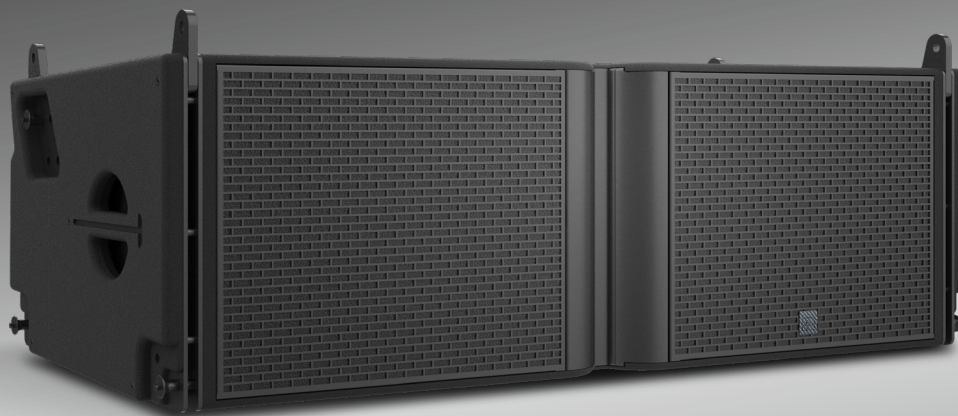


RAFALE 15

RL15



Acoustic Design: Precision Coverage, Natural Fidelity

Engineered for flagship large-scale applications, the RL15 supports vertical arrays of up to 24 cabinets with multi-stage (70°/90°/110°) directivity control. It is configured with dual 15" neodymium LF drivers and a centrally mounted coaxial structure consisting of a horn-loaded 10" MF driver and three HF compression drivers (1.4" exit, 3" voice coil). The 35 Hz – 20 kHz range provides powerful, balanced full-range performance.

Structure & Durability: High-Efficiency Rigging, Field-Ready

The RL15 uses a patented steel-aluminum rigging system (0°–5° splay). The birch plywood cabinet features a polyurea coating and a reinforced metal grille with a water-repellent inner layer, ensuring exceptional durability in demanding touring environments.

Application & Expansion: High-Power Extension

A premier choice for large-scale tours and venues, it integrates with GS218 subwoofers to maximize low-end SPL and satisfy high-intensity professional requirements.

35 Hz - 20 kHz
Frequency Range

149 dB
Sound Pressure Level (SPL)

2 x 15" (LF)
Transducers

1 x 10" (MF)
Transducers

3 x 3" (HF)
Transducers

H 70° 90° 110° Adjustable
Directivity

V 5°
Directivity

0° 1° 2° 3° 4° 5°
Adjustable Splay Angle

IP55
IP Rating

98 kg
Net Weight

Technical Specifications:

| | | | |
|---------------------------|---|-----------------|--------------------|
| AES Power | LF: 1,400 W | HMF: 400 W | |
| Program Power | LF: 2,800 W | HMF: 800 W | |
| Nominal Impedance | LF: 4 ohm | HMF: 8 ohm | |
| Acoustic Modes | LF: Bandpass-loaded | MF: Horn-loaded | HF: Waveguide-horn |
| Pin Assignment | 1+/1-(LF), 2+/2-(MHF) | | |
| Connectors | 2x4-points Speakon®, 1xLink cable | | |
| Rigging Hardware | High-grade stainless steel and aluminum-magnesium alloy with specialized outdoor powder coating | | |
| Cabinet Coating | All-birch plywood with black polyurea wear-resistant finish | | |
| Dimensions (W x H x D) mm | 1,390x487x562 mm (54.7"x19.1"x22.1") | | |
| Product Code | 12316000209624 | | |

Dimensional Drawing:

