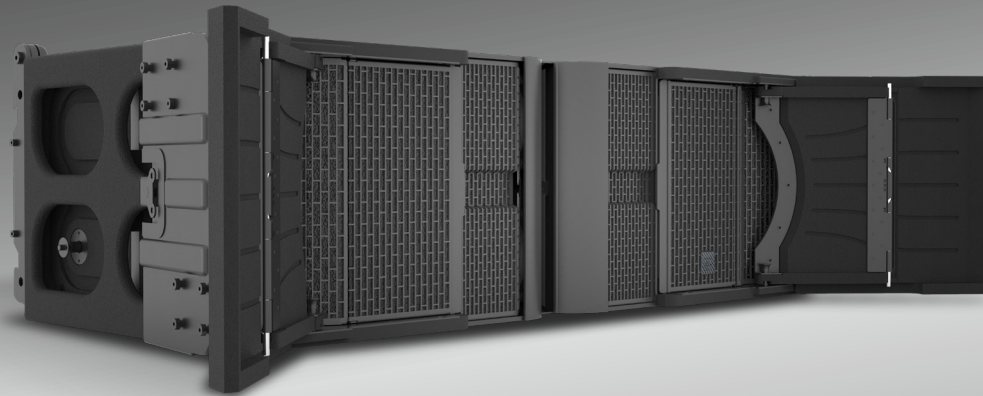


RAFALE1

RL1



Acoustic performance: Precise coverage and supreme fidelity

The RL1 large-format line array loudspeaker can be flown in vertical columns of up to 24 cabinets, supporting multiple adjustable directivity settings from 90° to 110°. It houses dual 12" LF drivers to solidify the low end, four 6.5" MF drivers to restore vocal details, and two custom B&C HF drivers coupled with a high-precision waveguide. With a frequency response of 35 Hz – 20 kHz, it delivers powerful long-throw projection and balanced tonal reproduction.

Construction and durability: Efficient rigging and all-weather tolerance

Equipped with an integrated stainless-steel quick-rigging system, the cabinet allows splay angle adjustments from 0° to 5°. The Baltic birch plywood enclosure is finished with an impact-resistant polyurea coating. A solid metal grille combined with an acoustically transparent, water-repellent fabric provides comprehensive protection.

Application and expansion: Multi-scenario adaptability and performance upgrade

Suitable for various large-scale performance scenarios, it can be paired with the RL1 SUB to reinforce low-frequency headroom and overall SPL, fully satisfying the intense, wide-coverage professional sound reinforcement demands of large venues.

35 Hz - 20 kHz
Frequency Range

147 dB
Sound Pressure Level (SPL)

2 x 12" (LF)
Transducers

4 x 6.5" (MF)
Transducers

2 x 3" (HF)
Transducers

H 90° 110° Adjustable
Directivity

V 5°
Directivity

0° 0.5° 1° 1.5° 2° 2.5° 3° 4° 5°
Adjustable Splay Angle

IP55
IP Rating

102 kg
Net Weight

Technical Specifications:

AES Power	LF1: 1,000 W	LF2: 1,000 W	MF: 800 W	HF: 220 W
Program Power	LF1: 2,000 W	LF2: 2,000 W	MF: 800 W	HF: 440 W
Nominal Impedance	LF1: 8 ohm	LF2: 8 ohm	MF: 8 ohm	HF: 8 ohm
Acoustic Modes	LF: Bass-reflex	MF: Horn-loaded	HF: Waveguide-horn	
Pin Assignment	1+/1- (LF1) , 2+/2- (LF2),3+/3- (MF) ,4+/4- (HF))			
Connectors	2x4-points Speakon®, 1xLink cable			
Rigging Hardware	High-grade stainless steel with specialized outdoor powder coating			
Cabinet Coating	All-birch plywood with black polyurea wear-resistant finish			
Dimensions (W x H x D) mm	1,178x390x587 mm (46.4"x15.4"x23.1")			
Product Code	12313100214799			

Dimensional Drawing:

