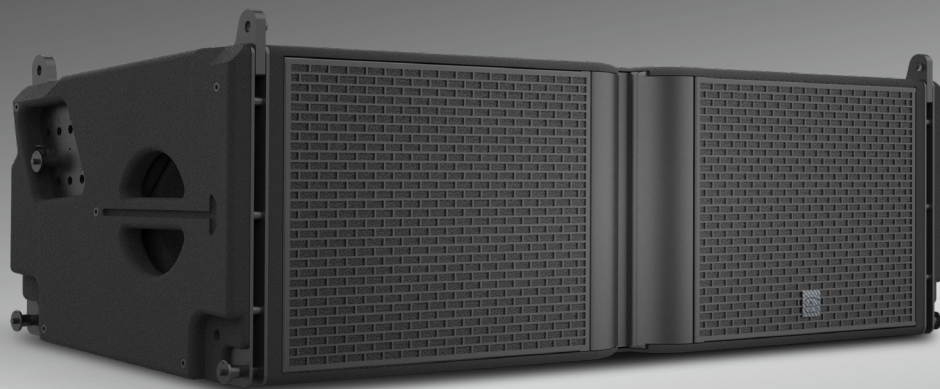


RAFALE2

RL2



Acoustic Design: Precise Dispersion, Superior Performance

The RL2 is engineered for large-scale indoor sound reinforcement. Supporting flown arrays of up to 24 enclosures, it features adjustable horizontal directivity (70°/90°/110°). The acoustic configuration includes dual 12" neodymium LF drivers and a centrally mounted coaxial section featuring a horn-loaded 10" MF driver and two HF drivers (1.4" exit, 3" voice coil) coupled to dedicated line source waveguides. With a frequency response of 40 Hz – 20 kHz, it delivers balanced, high-fidelity sonic reproduction.

Structure & Durability: Efficient Rigging, Rugged Reliability

Equipped with a patented integrated steel-and-aluminum rigging system, the RL2 allows for splay angle adjustments from 0° to 8°. The Baltic birch plywood enclosure is finished with an impact-resistant, UV-protective polyurea coating. A robust metal grille backed by water-repellent, acoustically transparent fabric provides comprehensive protection.

Application & Expansion: Versatile Adaptation, System Synergy

Ideal for large-scale performance venues, the RL2 can be paired with GS218 subwoofers to reinforce low-frequency headroom, providing a complete solution for high-demand professional audio environments.

40 Hz - 20 kHz

Frequency Range

147 dB

Sound Pressure Level (SPL)

2 x 12" (LF)

Transducers

1 x 10" (MF)

Transducers

2 x 3" (HF)

Transducers

H 70° 90° 110° Adjustable

Directivity

V 8°

Directivity

0° 1° 2° 3° 4° 5° 6° 7° 8°

Adjustable Splay Angle

IP55

IP Rating

71 kg

Net Weight

Technical Specifications:

AES Power	LF: 1,400 W	HMF: 400 W	
Program Power	LF: 2,800 W	HMF: 800 W	
Nominal Impedance	LF: 6 ohm	HMF: 8 ohm	
Acoustic Modes	LF: Bass-reflex	MF: Horn-loaded	HF: Waveguide-horn
Pin Assignment	1+/1- (LF), 2+/2- (MHF)		
Connectors	2x4-points Speakon®		
Rigging Hardware	High-grade stainless steel and aluminum-magnesium alloy with specialized outdoor powder coating		
Cabinet Coating	All-birch plywood with black polyurea wear-resistant finish		
Dimensions (W x H x D) mm	1,184x398x482 mm (46.6"x15.7"x19.0")		
Product Code	12316000209411		

Dimensional Drawing:

